



CALL US ON 0353434370
0438809708
Email: sales@agnflow.com

agnFlow

AGRICULTURAL SUSTAINABLE SOLUTIONS

SELF-CLEANING FILTER

SELF-CLEANING FILTE

DS Series Electric Brush filter is a kind of automatic cleaning filtration, a brush is installed in the tank, and the brush is driven by the motor Dynamic rotation, install an electromagnetic diaphragm drain valve on the end cover of the filter. When cleaning, from the electronic control box on the time and pressure differential switch signal to pass. The control Panel opens the drain valve and starts the motor at the same time, driving the brush sub rotating brush off dirt impurities, in the role of hydraulic, through the sewage Valve discharge filter. Cleaning does not need to flow.



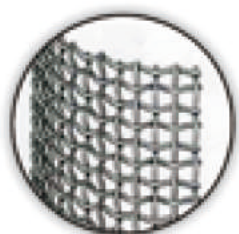
DS series	Y,F,T,L type
Single filter flow	25-9300t/h
Pipe size	DN50-DN1200mm
Pressure	1.0Mpa/1.6/Mpa/2.5Mpa/4.0Mpa
Filtration accuracy	80-5000 Micron
Filtration area	1500cm ² -75000cm ²
Control modes	Pressure difference/time/manual/PLC
Cleaning method	Electric brush

SELECTION METHOD

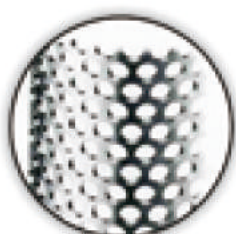
1. Determine the parameters: maximum operating flow Q or import and export diameter DN, the highest operating pressure p, operating temperature and filtration accuracy.
2. According to the site installation location, determine the result form.
3. Determine the relevant materials: filter material, shell material.
4. Determine the filter model.

FILTERING AND CLEANING

The flow of water flows from the filter inlet, after filtering the net outflow from the outlet, the flow of impurity particles in the filter in the internal surface accumulation, so that the filter screen internal and external difference, when the filter screen inside and outside pressure difference to reach the predetermined value (0.05 MPa), differential pressure switch will pass signal to the control plate, The control plate starts the motor to drive the brush to rotate brush off the dirt impurity of the filter net. At the same time open the sewage valve, dirt from the sewage valve drain.



Drilling mesh



V type mesh



Weaving mesh



CALL US ON 0353434370
0438809708
Email: sales@agnflow.com

agnFlow

AGRICULTURAL SUSTAINABLE SOLUTIONS

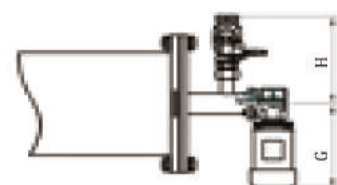
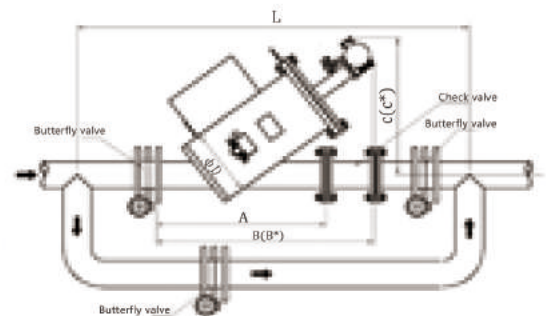
Single filter flow	25-1200t/h
Working pressure(Min.)	0.2Mpa
Working pressure(Max.)	0.6Mpa/1.0Mpa/1.6/Mpa/2.5Mpa/4.0Mpa
Working temperature(Max.)	70°C
Filtration accuracy	80-5000 Micron
Control modes	Pressure difference/time/manual/PLC
Cleaning time	60 sec.
Loss of pressure	0.01-0.03Mpa
Control voltage	AC220V
Rated operating voltage	Three-phase,AC220 ,380 v / 50 Hz



DSY type self-cleaning filter

Model	Inlet/Outlet pipe diameter (mm)	Flow (t/h)	Area (cm ²)	Drain Valve DN(mm)	Cleaning capacity / per time (m ³)	Motor power (Kw)	Weight (Kg)
DSY2	DN50	25	3000	DN25	0.06	0.09	90
DSY2.5	DN65	30	3000	DN25	0.06	0.09	95
DSY3	DN80	50	3000	DN25	0.06	0.09	106
DSY4	DN100	80	3000	DN25	0.06	0.09	110
DSY5	DN125	120	3000	DN40	0.15	0.09	118
DSY6	DN150	160	5900	DN40	0.15	0.18	165
DSY8	DN200	300	5900	DN40	0.15	0.18	185
DSY10	DN250	450	9500	DN50	0.20	0.37	285
DSY12	DN300	650	9500	DN50	0.20	0.37	320

SIZE DATA									
Model	ΦD mm	A mm	B mm	B* mm	C mm	C* mm	G mm	H mm	L mm
DSY2	Φ219	650	832	1300	552	850	225	235	1500
DSY2.5	Φ219	650	832	1300	552	850	225	235	1500
DSY3	Φ219	650	832	1300	552	850	225	235	1500
DSY4	Φ273	650	832	1300	552	850	225	235	1500
DSY5	Φ273	650	832	1300	552	850	225	235	1500
DSY6	Φ273	800	1318	2150	920	1500	385	310	2800
DSY8	Φ273	800	1318	2150	920	1500	385	310	2800
DSY10	Φ426	1200	1480	2300	942	1500	440	400	3000
DSY12	Φ426	1200	1480	2300	942	1500	440	400	3000



Note: B*, C* is the Min. size for open the filter



CALL US ON 0353434370
0438809708
Email: sales@agnflow.com

agnFlow

AGRICULTURAL SUSTAINABLE SOLUTIONS

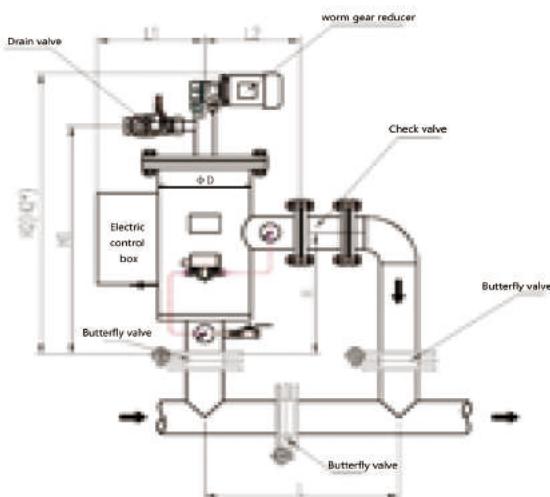


Single filter flow	25-2800t/h
Working pressure(Min.)	0.2Mpa
Working pressure(Max.)	0.6Mpa/1.0Mpa/1.6/Mpa/2.5Mpa/4.0Mpa
Working temperature(Max.)	70°C
Filtration accuracy	80-5000 Micron
Control modes	Pressure difference/time/manual/PLC
Cleaning time	60 sec.
Loss of pressure	0.01-0.03Mpa
Control voltage	AC220V
Rated operating voltage	Three-phase,AC220 ,380 v / 50 Hz



DSL type self-cleaning filter

Model	Inlet/Outlet pipe diameter (mm)	Flow (t/h)	Area (cm ²)	Drain Valve DN(mm)	Cleaning capacity / per time (m ²)	Motor power (Kw)	Weight (Kg)
DSL2	DN50	25	3000	DN25	0.06	0.09	88
DSL2.5	DN65	30	3000	DN25	0.06	0.09	92
DSL3	DN80	60	3000	DN25	0.06	0.09	95
DSL4	DN100	80	3000	DN25	0.06	0.09	105
DSL5	DN125	120	3000	DN25	0.06	0.09	115
DSL6	DN150	160	5900	DN40	0.15	0.18	170
DSL8	DN200	300	5900	DN50	0.15	0.18	185
DSL10	DN250	450	9500	DN50	0.20	0.37	230
DSL12	DN300	650	9500	DN50	0.20	0.37	265
DSL14	DN350	900	12000	DN50	0.35	0.55	430
DSL16	DN400	1200	12000	DN50	0.35	0.55	450
DSL18	DN450	1500	15000	DN65	0.35	0.75	680
DSL20	DN500	2000	15000	DN65	0.35	0.75	720
DSL24	DN600	2800	18000	DN65	0.35	0.75	915



SIZE DATA								
Model	ΦD mm	H mm	H1 mm	H2 mm	H2* mm	L1 mm	L2 mm	L mm
DSL2	Φ273	400	753	926	1500	320	280	800
DSL2.5	Φ273	400	753	926	1500	320	280	800
DSL3	Φ273	400	753	926	1500	320	280	800
DSL4	Φ273	400	753	926	1500	320	280	800
DSL5	Φ273	400	753	926	1500	320	280	800
DSL6	Φ325	800	1300	1527	2700	310	350	1000
DSL8	Φ325	800	1300	1527	2700	310	350	1000
DSL10	Φ426	800	1375	1606	2800	400	400	1200
DSL12	Φ426	800	1375	1606	2800	400	400	1200
DSL14	Φ612	900	1552	1784	3000	525	500	1500
DSL16	Φ612	900	1552	1784	3000	525	500	1500
DSL18	Φ816	950	1700	1943	3200	605	600	1800
DSL20	Φ816	950	1700	1943	3200	605	600	1800
DSL24	Φ916	1000	1722	1963	3200	640	650	2000

Note:H2*is the Min. size for open the filter



CALL US ON 0353434370
0438809708
Email: sales@agnflow.com

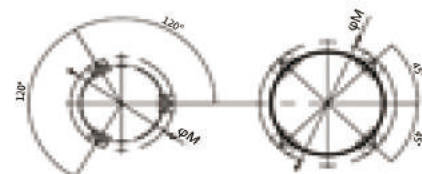
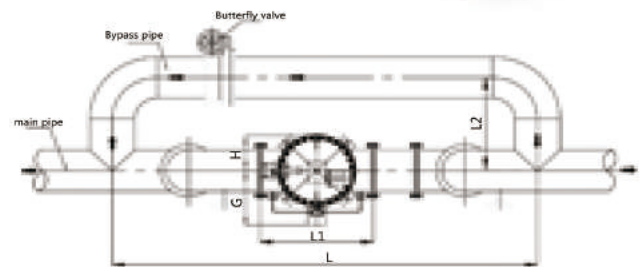
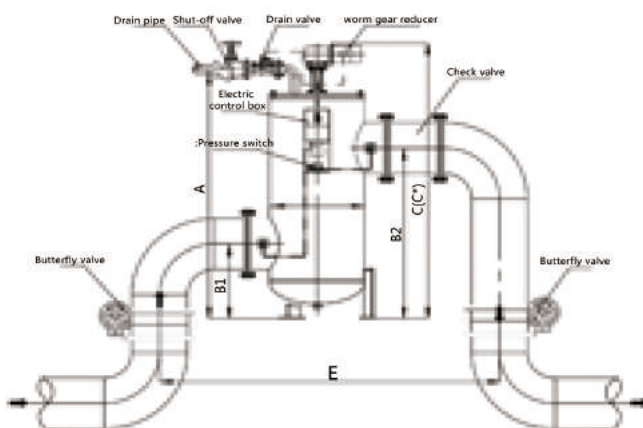
agnFlow

AGRICULTURAL SUSTAINABLE SOLUTIONS

Model	Inlet/Outlet pipe diameter (mm)	Flow (t/h)	Area (cm ²)	Drain valve DN(mm)	Cleaning capacity / per time (m ³)	Motor power (Kw)	Weight (Kg)
DST2	DN50	25	3000	DN25	0.06	0.09	90
DST2.5	DN65	30	3000	DN25	0.06	0.09	95
DST3	DN80	60	3000	DN25	0.06	0.09	105
DST4	DN100	80	3000	DN25	0.06	0.09	120
DST5	DN125	120	3000	DN25	0.06	0.09	135
DST6	DN150	160	5900	DN40	0.15	0.18	185
DST8	DN200	300	5900	DN40	0.15	0.18	205
DST10	DN250	450	9500	DN50	0.20	0.37	285
DST12	DN300	650	9500	DN50	0.20	0.37	320
DST14	DN350	900	12000	DN50	0.35	0.55	480
DST16	DN400	1200	12000	DN50	0.35	0.55	520
DST18	DN450	1500	15000	DN65	0.35	0.75	835
DST20	DN500	2000	15000	DN65	0.35	0.75	900
DST24	DN600	2800	18000	DN65	0.35	0.75	1080

Single filter flow	25-2800t/h
Working pressure(Min.)	0.2Mpa
Working pressure(Max.)	0.6Mpa/1.0Mpa/1.6/Mpa/2.5Mpa/4.0Mpa
Working temperature(Max.)	70°C
Filtration accuracy	80-5000 Micron
Control modes	Pressure difference/time/manual/PLC
Cleaning time	60 sec.
Loss of pressure	0.01-0.03Mpa
Control voltage	AC220V
Rated operating voltage	Three-phase,AC220 ,380 v / 50 Hz

DST type self-cleaning filter



Outrigger distribution DN250-400

Outrigger distribution DN450-600



CALL US ON 0353434370
0438809708
Email: sales@agnflow.com

agnFlow

AGRICULTURAL SUSTAINABLE SOLUTIONS



SIZE DATA												
Model	ΦD mm	B1 mm	B2 mm	C mm	C* mm	E mm	G mm	H mm	L1 mm	L2 mm	L mm	ΦM mm
DST2	1033	300	700	1207	2000	1100	360	182.5	600	400	1500	370
DST2.5	1033	300	700	1207	2000	1100	360	182.5	600	400	1500	370
DST3	1033	300	700	1207	2000	1100	360	182.5	600	400	1500	370
DST4	1033	300	700	1207	2000	1100	360	182.5	600	400	1500	370
DST5	1033	300	700	1207	1800	1100	360	182.5	600	400	1500	370
DST6	1648	350	950	1877	3000	1600	385	210	700	500	2000	410
DST8	1648	350	950	1877	3000	1600	385	210	700	500	2000	410
DST10	1890	500	1150	2126	3300	2000	435	260	850	600	2500	560
DST12	1890	500	1150	2126	3300	2000	435	260	850	600	2500	560
DST14	2052	550	1400	2284	3500	2800	530	306	1050	800	3500	750
DST16	2052	550	1400	2284	3500	2800	530	306	1050	800	3500	750
DST18	2340	700	1600	2583	3800	3500	630	408	1200	1000	4500	1000
DST20	2340	700	1600	2583	3800	3500	630	408	1200	1000	4500	1000
DST24	2500	800	1750	2740	4000	4000	680	458	1300	1200	5000	1100

Note:C*is the Min. size for open the filter

Model	Inlet/Outlet pipe diameter (mm)	Flow (t/h)	Area (cm ²)	Drain valve DN(mm)	Cleaning capacity / per time (m ²)	Motor power (Kw)	Weight (Kg)
DSF2	DN50	25	3000	DN25	0.06	0.09	85
DSF2.5	DN65	30	3000	DN25	0.06	0.09	88
DSF3	DN80	60	3000	DN25	0.06	0.09	92
DSF4	DN100	80	3000	DN25	0.06	0.09	98
DSF5	DN125	120	3000	DN25	0.06	0.09	105
DSF6	DN150	160	5900	DN40	0.15	0.18	165
DSF8	DN200	300	5900	DN40	0.15	0.18	190
DSF10	DN250	450	9500	DN50	0.20	0.37	255
DSF12	DN300	650	9500	DN50	0.20	0.37	290

Single filter flow	25-1200t/h
Working pressure(Min.)	0.2Mpa
Working pressure(Max.)	0.6Mpa/1.0Mpa/1.6/Mpa/2.5Mpa/4.0Mpa
Working temperature(Max.)	70°C
Filtration accuracy	80-5000 Micron
Control modes	Pressure difference/time/manual/PLC
Cleaning time	60 sec.
Loss of pressure	0.01-0.03Mpa
Control voltage	AC220V
Rated operating voltage	Three-phase,AC220 ,380 v / 50 Hz



DSF type self-cleaning filter

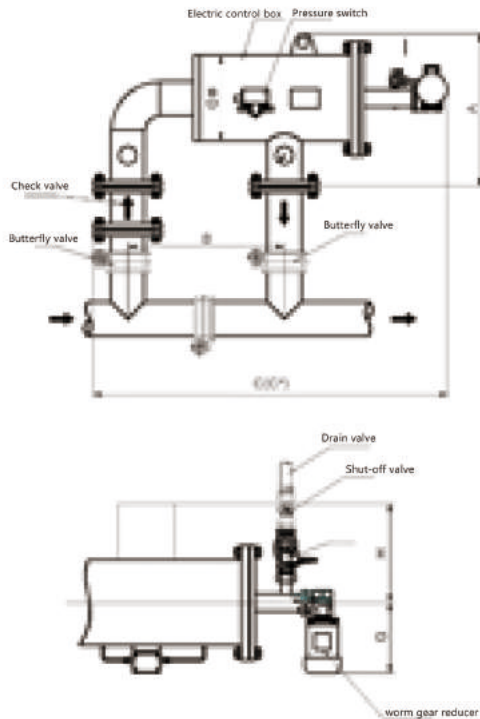


CALL US ON 0353434370
0438809708
Email: sales@agnflow.com

agnFlow

AGRICULTURAL SUSTAINABLE SOLUTIONS

DSF type filter installation instruction



SIZE DATA							
Model	ΦD mm	A mm	B mm	C mm	C* mm	G mm	H mm
DSF2	Φ273	460	500	1110	1800	325	320
DSF2.5	Φ273	460	500	1110	1800	325	320
DSF3	Φ273	460	500	1115	1800	325	320
DSF4	Φ273	460	500	1130	1800	325	320
DSF5	Φ273	460	500	1140	1800	325	320
DSF6	Φ325	550	800	1745	3000	345	310
DSF8	Φ325	550	800	1850	3000	345	310
DSF10	Φ426	790	1000	1995	3200	395	400
DSF12	Φ426	790	1000	2100	3500	395	400

Note:C*is the Min. size for open the filter

APPLICATION FIELDS



- ① Agricultural irrigation--especially for water sources with high levels of impurities, Sprinkler irrigation, drip irrigation, parks, golf courses, turf watering, etc.
- ② Raw Water Treatment--to the surface of the river, lake, seawater, reservoirs Filtration of water, wells and groundwater to remove sand, bacteria and algae class, organic matter and so on.
- ③ Industrial Circulating water filtration--in the water quality has certain requirements Prepare such as: Cooling tower, rolling mill, caster, polishing, water pump, electromagnetic Valves, ion exchangers, sprayers, heat exchangers, etc. or for drains Use on the road, can filter out the impurities in the water, avoid piping, nozzles parts blocked.
- ④ Cooling Water Treatment--cooling tower, supplementary water system, air-conditioning system, Water filtration of DC system to reduce sediment production in heat exchanger, keeping its cooling effect.
- ⑤ Paper industry--white water filtration.
- ⑥ Plastics Industry--Product recovery cooling water filtration.